



CABLOADER

Operator's Manual

INTRODUCTION

The Engl CABLOADER is a full-featured speaker cabinet simulator, IR loader and DI box. This all in one solution can transform your pedalboard into a full DI rig, provide a perfect link from your amplifier to a recording interface, or even just give you a great way to hook up your pedals to your headphones for practice.

CABLOADER sports a whole host of IR based digital cabinet simulation models, with various microphone and optional power amp emulations. These allow you to digitally recreate the sound and feel of a fully mic'd guitar speaker and experiment with cab models you may never be able to obtain in real life. 3rd party IR loading is supported via the proprietary software so you can load-in .wav IR files from any of your favourite manufacturers or studios.

As complicated as the digital wizardry is, that's going on inside this little box. The CABLOADER has been designed with sheer simplicity and ease of use in mind. Even a complete new-comer to the world of digital cab sims and IR loaders can quickly set up an amazing sound with it's intuitive controls. The quality of the simulations and the extensive connection options make this the perfect tool for anyone from beginners to professionals.

FEATURES

12 built-in speaker cab models

Load up to four 3rd party IR models via Micro USB

4 power amp models with adjustable presence

10 microphone models with adjustable placement

Selectable instrument/line input level

Integrated DI box with XLR out and ground-lift

Dedicated headphone output

THRU output for use in amplifier effects loop

2 FAVOURITE footswitches allow toggling between 3 completely different cab setups

PEDAL LAYOUT

1. CAB

Select speaker cabinet model
13 - 16 are for 3rd party IR models

2. POWER AMP

Select power amp tube type
OFF - Deactivate POWER AMP modelling

3. PRESENCE

Adjust the brightness of the POWER AMP model

4. MASTER

Adjust the output volume level of CABLOADER

5. MIC

Select microphone, model and positions

6. CENTER

Adjust microphone offset

7. DISTANCE

Adjust distance between MIC and CAB

8. FAVOURITE A

Save and recall your settings as a preset.
Press and hold the footswitch for three seconds to save your current settings.
Press to toggle your saved preset on/off.

9. FAVOURITE B

Save and recall your settings as a preset. Press and hold the footswitch for three seconds to save your current settings. Press to toggle your saved preset on/off. Simultaneously press and hold FAVOURITE A + FAVOURITE B for three seconds to bypass CABLOADER

10. CLIP LED

CLIP LED indicates power on/off, input clipping and bypass mode.
BLUE = Power connected and pedal on RED = Input signal clipping
OFF = Pedal in bypass mode

11. DC IN

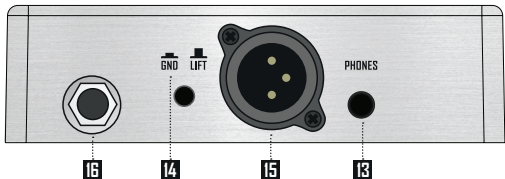
Connect a 9V DC power supply

12. USB

Connect to your computer using a Micro USB cable to load 3rd party IR models using the proprietary software



PEDAL LAYOUT



13. PHONES

Dedicated headphone output

14. GROUND LIFT

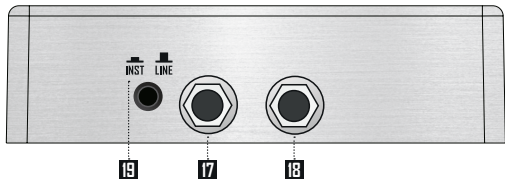
Use to eliminate ground loop noise when connected to the XLR OUTPUT

15. XLR OUTPUT

Connect to this output using a balanced XLR cable

16. UNBALANCED OUTPUT

Connect to this output using a standard 1/4" jack cable



17. INPUT

Connect instrument, pedals or other equipment using a standard 1/4" jack cable

18. THRU

Connect to effects return of amplifier when using the CABLOADER in an amplifier effects loop

19. INPUT LEVEL SELECTOR

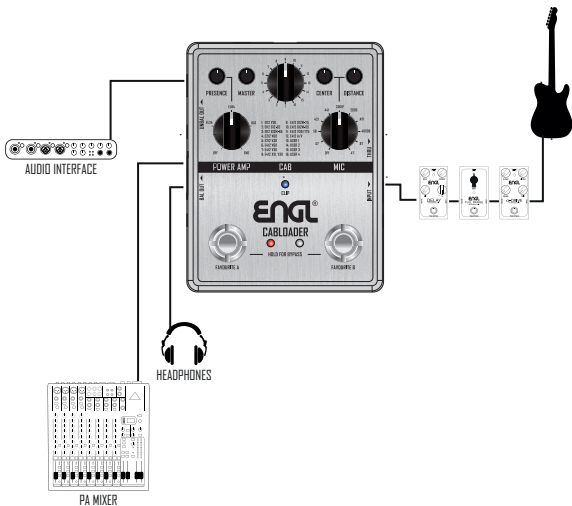
Select between instrument level and line level .

CONNECTIONS

Due to the versatile nature of CABLOADER, there are many setups that are possible with lots of different kinds of equipment. Here are a couple of our recommended setups.

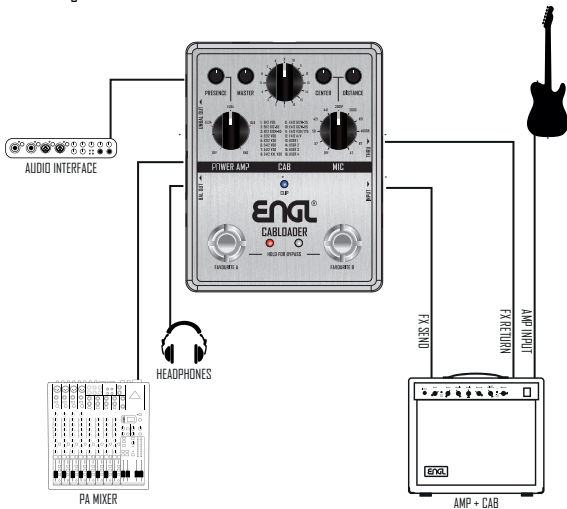
PEDALBOARD

In this setup CABLOADER is being used to transform your regular gain pedals into a full sounding amp rig for connecting directly to the PA and/or audio interface device.



AMPLIFIER

In this setup CABLOADER is being used to send your amplifiers preamp section direct to the PA system and/or audio interface with full speaker cab simulation for a great sound. The THRU output is allowing your amplifiers preamp to continue it's regular path, so your amp can still be heard through it's real life speaker cabinet for on-stage monitoring.



Always ensure that there is a speaker cabinet or a load of the correct impedance connected to your amplifiers output. DO NOT connect CABLOADER to your amplifiers speaker output.

FAVOURITES

CABLOADER lets you store and recall 2 of your favourite cab setups as presets using the FAVOURITE A and FAVOURITE B footswitches. This allows you to easily toggle between either of your "favourite" setups and also the current settings of the pedal's control knobs.



FAVOURITE A

Press and hold for 3 seconds



After setting up a sound that you are happy with, press and hold the FAVOURITE A footswitch for 3 seconds. The corresponding LED will flash 3 times to confirm the settings have been stored.

Setup a new sound with different settings and repeat the same step to store those settings to FAVOURITE B.



FAVOURITE A

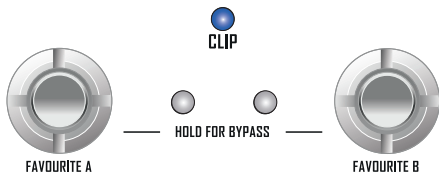


HOLD FOR BYPASS



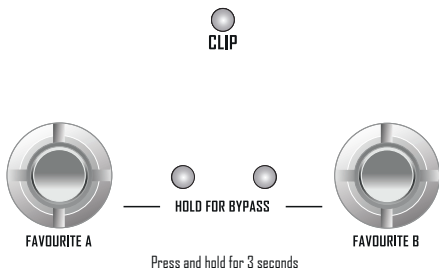
FAVOURITE B

Press FAVOURITE A or FAVOURITE B to recall the settings that you saved. The corresponding LED will illuminate to indicate which preset is loaded.



Pressing the footswitch for the currently selected FAVOURITE will disengage it and all of the settings will be equal to the current position of their respective control knobs. This effectively lets you switch between 3 completely different cab setups with ease.

BYPASS MODE



Press and hold both footswitches for 3 seconds to BYPASS the CABLOADER pedal. All LED's will turn off to indicate BYPASS mode. Press any footswitch to exit BYPASS MODE.

CAB MODELS

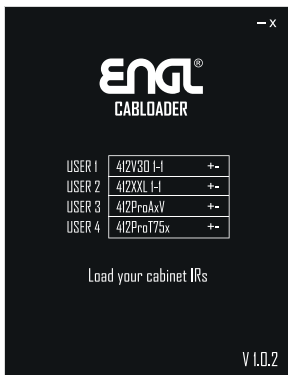
CAB MODEL		
#	CABINET SIZE	BASED ON
1	1 x 12	Engl E112 Pro Celestion Vintage 30*
2	1 x 12	Engl E112 Retro Celestion Heritage G12-65*
3	1 x 12	Engl E112 Pro Celestion Creamback G12M-65*
4	2 x 12	Engl E212 Standard Celestion V60*
5	2 x 12	Engl E212 Pro Celestion Vintage 30*
6	4 x 12	Engl E412 Standard Celestion V60*
7	4 x 12	Engl E412 Pro Celestion Vintage 30*
8	4 x 12	Engl E412 Pro XXL Celestion Vintage 30*
9	4 x 12	Engl E412 Pro Celestion Greenback G12M-25*
10	4 x 12	Engl E412 Pro Celestion Creamback G12M-65*
11	4 x 12	Engl E412 Pro Celestion Vintage 30/G12-T75*
12	4 x 12	Engl E412 Pro Celestion A-Type/V-Type*
13	USER	User 1 (for third party IR)
14	USER	User 2 (for third party IR)
15	USER	User 3 (for third party IR)
16	USER	User 4 (for third party IR)

Please Note: *The manufacturers and product names mentioned above are trademarks or registered trademarks of their respective owners. The trademarks were used merely to identify the sound character of the products.

MIC MODELS

MIC MODEL	
MODEL	BASED ON
57	Shure SM 57 Dynamic*
58	Shure SM 58 Dynamic*
421	Sennheiser MD 421 Dynamic*
441	Sennheiser MD 441U Dynamic*
2001P	Marshall MXL 2001P*
2003	Marshall MXL 2003*
NT1	Rode NT-1*
4000B	AKG C4000B*
87	Neumann U87*
47	Neumann U47*

Please Note: *The manufacturers and product names mentioned above are trademarks or registered trademarks of their respective owners. The trademarks were used merely to identify the sound character of the products.



SPECIFICATION

Output: 1 x 1/4" Unbalanced, 1 x XLR, 1 x THRU, 1 x Headphone

USB Port: Micro-B

Sampling rate: at least 44.1KHz

Sampling accuracy: 24bit

Signal to noise ratio: 100dB

IR Format: .wav

Sampling Length: 1024 Samples (23.22ms)

Power Requirements: 9V DC 300mA

Dimensions: 120mm(D) x 95mm(W) x 55.5mm(H)

Weight: 409g

Accessories: Owner's Manual

ENGL[®]
www.engl-amps.com