

avant 215A

Powered, bi-amplified portable system



- » **Bi-amplified 2-way system**
- » **500 W low frequency 3rd Generation Class D power amplifier**
- » **100 W high frequency 3rd Generation Class D power amplifier**
- » **2 x 15" speakers (3" voice coil)**
- » **2" diaphragm neodymium compression driver**

The Avant 215A provides the musician, DJ or A/V professional with a system that redefine the meaning of portable PA.

The loudspeaker components of the Avant 215A include two 15AV, high efficiency 15" cone transducer with 3" voice coil and one M-50N neodymium compression driver with 2" titanium diaphragm. The driver is attached to a 80° x 50° rotatable horn.

The two-way 3rd Generation Class D amplifier offers 500 W for the low frequency transducers and 100 W for the high frequency section. The amplifier provides extended bandwidth, improved dynamic range and exceptionally low distortion.

The efficiency of the Avant amplifiers measures more than 90%. This ensures cool operation so that no fans or bulky heatsinks are needed. The low idle consumption also offers an easy way to reduce overall power use.

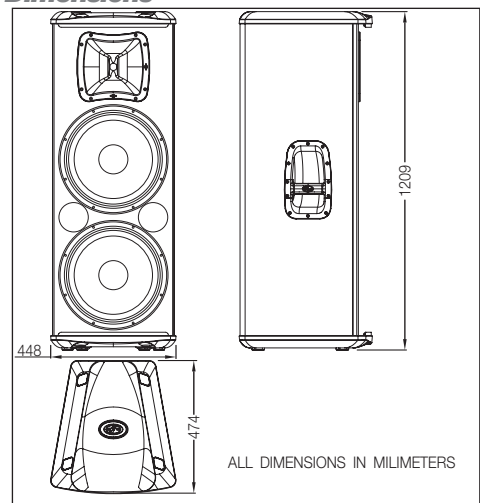
Signal processing is accomplished by way of a powerful 24 bit DSP providing unparalleled control over critical signal parameters.

The Avant 215A is protected by two types of limiters—an instantaneous peak limiter to safeguard the systems against spikes and a sonically transparent RMS limiter that controls excessive overpowering and thermal damage to components.

Technical Specifications

Low Frequency Power Amplifier ¹	1000 W _{peak} - 500 W _{continuous}
High Frequency Power Amplifier ¹	200 W _{peak} - 100 W _{continuous}
Input Type	Balanced Differential Line
Input Impedance	Line: 20 kohms Mic: 20 kohms
Sensitivity ²	Line: 1.95 V (+8 dBu) Mic: 20 mV (-32 dBu)
On-axis Frequency Range (-10 dB)	40 Hz - 20 kHz (EQ Flat)
Maximum Peak SPL at 1 meter ³	136 dB
HF Horn Coverage Angles (-6 dB)	80° x 50° (Rotatable)
Enclosure Material	Birch Plywood
Finish	Black Paint with ABS Plastic Endcaps
Transducers/Replacement Parts	LF: 2 x 15AV/GM 15P HF: 1 x M-50N/GM M-50
Connectors	INPUT: Female XLR-Jack LOOP THRU: Male XLR AC INPUT: Male IEC
AC Power Requirements	115 V, 50 Hz/60 Hz 230 V, 50 Hz/60 Hz
Dimensions (H x W x D)	121 x 44.8 x 47.6 cm (47.6 x 17.6 x 18.7 in)
Weight	44 kg (96.8 lb)
Accessories (optional)	ANL-5

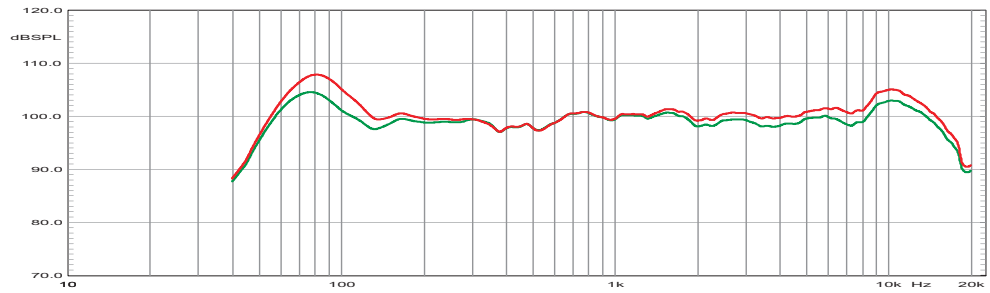
Dimensions



1. Continuous power at driver impedance.
2. Level control at maximum.
3. Measured maximum peak level.

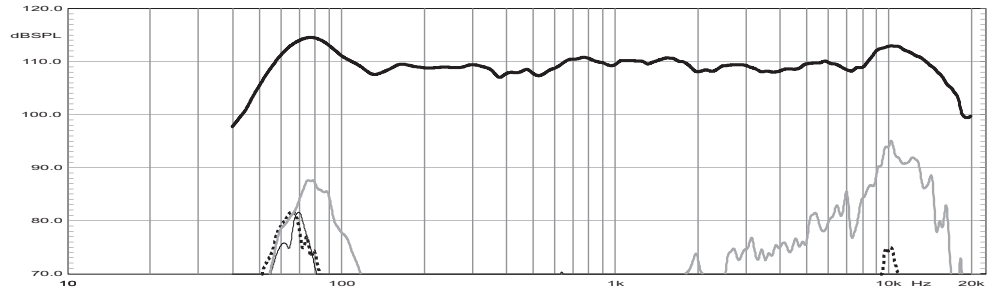
Frequency Response

Shows the frequency response at 1 m of a unit radiating to an anechoic environment and driven by a swept sine wave signal (-20 dBu input). Green: Flat EQ. Red: Boost EQ



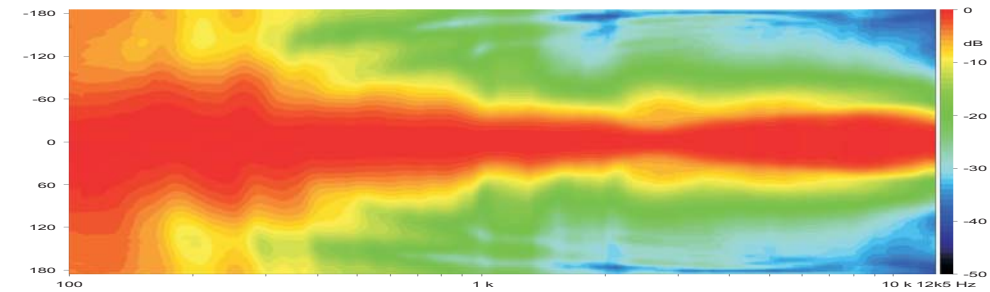
Distortion

Shows the Second Harmonic Distortion (grey) and Third Harmonic Distortion (dotted) curves for a unit driven by a swept sine wave signal (-10 dBu input).



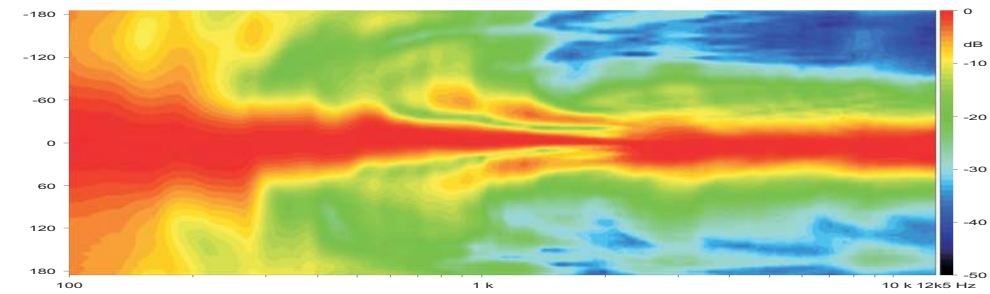
Horizontal Directivity

Shows normalized horizontal isobar plot.



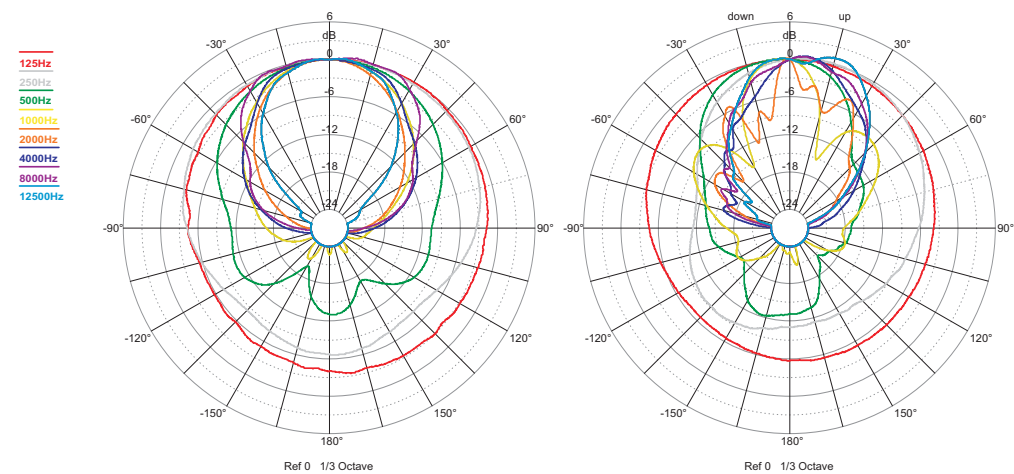
Vertical Directivity

Shows normalized vertical isobar plot.



Polar Response

Shows the 1/3 octave band horizontal (left) and vertical (right) polars for the indicated frequencies. Full scale is 30 dB, 6 dB per division.



NOTES. 1.Frequency response: referred to 1 m; low end obtained through the use of near field techniques; one-third octave smoothed for correlation with human hearing. 5.Polars were acquired by placing the unit on a computer controlled turntable inside our anechoic chamber. Measurement distance was 4 m.

Product improvement through research and development is a continuous process at D.A.S. Audio. All specifications subject to change without notice.