

iCON
Pro Audio



PLATFORM · U22

USB3.0 Super-Speed







User manual



CE FC



N1630

	<p>CAUTION</p> <p>RISK OF ELECTRIC SHOCK DO NOT OPEN RISQUE DE CHOC ELECTRIQUE NE PAS OUVRIR</p> <p>CAUTION: TO REDUCE THE RISK OF ELECTRIC SHOCK DO NOT REMOVE COVER (OR BACK) NO USER-SERVICEABLE PARTS INSIDE REFER SERVICING TO QUALIFIED PERSONNEL</p> <p>ATTENTION: POUR EVITER LES RISQUES DE CHOC ELECTRIQUE: NE PAS ENLEVER LE COUVERCLE. AUCUN ENTRETIEN DE PIECES INTERIEURES PAR L'USAGER. CONFIER L'ENTRETIEN AU PERSONNEL QUALIFIE.</p> <p>AVIS: POUR EVITER LES RISQUES D'INCENDIE OU D'ELECTROCUTION, N'EXPOSEZ PAS CET ARTICLE A LA PLUIE OU A L'HUMIDITE</p>		 	<p>The lightning flash with arrowhead symbol within an equilateral triangle is intended to alert the user to the presence of uninsulated dangerous voltage within the product's enclosure, that may be of sufficient magnitude to electric shock to persons. Le symbol clair avec point de flèche à l'intérieur d'un triangle équilatéral est utilisé pour avertir l'utilisateur de la présence d'un voltage dangereux non isolé à l'intérieur de l'appareil.</p> <p>The exclamation point within an equilateral triangle is intended to alert the user of the presence of important operating and maintenance (servicing) instructions in the literature accompanying the appliance. Le point d'exclamation à l'intérieur d'un triangle équilatéral est employé pour avertir les utilisateurs de la présence d'instructions importantes pour le fonctionnement et l'entretien (service) dans le livret d'instruction accompagnant l'appareil.</p>
---	---	---	---	--

Important Safety Instructions

1. Read this manual thoroughly before using this unit.
2. Keep this manual for future reference.
3. Take notice of and comply with all warnings included in the user's manual or indicated on the appliance.
4. Follow all instructions included in this manual.
5. Do not expose this unit to rain or moisture. Avoid having water or other liquids spilled on this unit.
6. When cleaning the cabinet or other parts of this appliance, use only a dry or slightly damp soft cloth.
7. Do not block any ventilation openings or interfere with the proper ventilation of this unit. Install in accordance with the manufacturer's instructions.
8. Do not use or store near any heat sources such as radiators, heat registers, stoves, or other heat-producing appliances.
9. Do not interfere with the safety purpose of the polarized or grounding-type plug. A polarized plug has two blades with one wider than the other. A grounding-type plug has two blades and a third grounding prong. These are designated for your safety. If the provided plug does not fit into your outlet, consult an electrician.
10. Protect the power cord from being walked on or otherwise damaged by items placed on or against them. Particular attention should be given to the plugs, receptacles, and the point where the cord exits the appliance.
11. To avoid the risk of electrical shock, do not touch any exposed wiring while the unit is in operation.
12. Only use attachments/accessories specified by the manufacturer.
13. Unplug this unit and all connected electrical equipment during lightning storms or when left unused a long period of time.
14. Refer all servicing to qualified service personnel. Servicing is required when the appliance has been damaged in any way or fails to operate normally.

WARNING: To reduce the risk of fire or electric shock, do not expose this unit to rain or moisture

Contents

Introductions	4
What's in the package?	4
Register your ICON ProAudio product to your personal account	5
Features	6
Front/Top Panel	7
Rear Panel.....	8
Windows driver installation	9
ProDriver	12
Mixer control panel	13
Settings (Sample rate and latency settings).....	15
ProDriver hosting rack.....	19
Hardware Connections	20
Specifications	21
Services.....	22

Introductions

Thank you for purchasing the ICON ProAudio PlatformU22 digital audio Interface. We sincerely trust this product will provide years of satisfactory service, but if anything is not to your complete satisfaction, we will endeavor to make things right.

In these pages, you'll find a detailed description of the features of the PlatformU22 digital audio interface, as well as a guided tour through its front and rear panels, step-by-step instructions for their setup and use, and full specifications.

Please register the product on our website at the below link
[www. iconproaudio.com/registration](http://www.iconproaudio.com/registration):

Please follow the step by step procedures. Start by inputting the device's serial number as well as your personal information, etc. By registering your product online, you will be entitled to service and after-sales support at our Help Center by visiting our website at **www.iconproaudio.com**. Also, all the registered products under your account will be listed on your personal product page where you will find updated information such as firmware/driver upgrades, software bundles, user manual downloads, etc. for your device.

As with most electronic devices, we strongly recommend you retain the original packaging. In the unlikely event the product must be returned for servicing, the original packaging (or reasonable equivalent) is required.

With proper care and adequate air circulation, your PlatformU22 digital audio interface will operate without any trouble for many years. We recommend that you record your serial number in the space provided below for future reference.

What's in the package?

- PlatformU22 USB Recording Interface
- Quick Start Guide
- DAW software – Reaper & KiloHearts
- USB 3.0 cable x 1

Register your ICON ProAudio product to your personal account

1. Check serial number of your device

Please go to [http:// iconproaudio.com/registration](http://iconproaudio.com/registration) or scan the QR code below.



Input your device's serial number and the other information on the screen. Click "Submit".

A message will pop up showing your device information such as model name and its serial number - Click "Register this device to my account" or if you see any other message, please contact our after-sales service team

2. Log in to your personal account page for existing user or sign up for new user

Existing user: Please log into your personal user page by inputting your user name and password.

New user: Please click "Sign Up" and fill in all the information.

3. Download all useful materials

All your registered devices under your account will show on the page. Each product will be listed along with all its available files such as drivers, firmware, user manual in different languages and bundled software etc. for download. Please make sure you have downloaded the necessary files such as driver before you begin device installation.

Features



- USB3.0 super-speed connectivity for ultra-low latency
- 24-Bit 192KHz 2-In/2-Out USB Recording Interface
- High dynamic range and S/N ratio:
 - DAC: THD+N: -112dB; Dynamic Range: 120dB
 - ADC: THD+N: -110dB; Dynamic Range: 120dB
- 2x2 analog I/O full duplex recording and playback
- 2 x ICON innovative unique mic/Line/Instrument preamps with individual gain control and phantom power switch
- 2 analog balanced inputs on 1/4" TRS jacks
- 2 analog balanced outputs on 1/4" TRS jacks
- 1 x 1 – 16 channel MIDI I/O
- Headphone output with individual volume control
- ICON "ProDrive III" provided with internal virtual routing for inputs and outputs
- Powerful hosting rack built-in with the "ProDrive III"
- Different plug-ins are provided
- Flexible channel routing via the software control panel
- Direct monitoring switch for "Stereo, Mono and PC" with individual volume control
- Supports DirectSound, WDM and ASIO2.0
- Compatible with Mac OS (Intel-Mac) and Windows 7, 8 & 10 (32-bit/64-bit)
- Full duplex, simultaneous record/playback
- Mixer-like layout and design for easy operation and visually friendly
- Rugged aluminum construction

Front/Top Panel



1. “Mic/Inst/Line” inputs 1/2

Unbalanced instrument/Line and mic level inputs. These hybrid connectors will accept a standard 3-pin XLR plug or a 1/4” TS connector.

2. 48V phantom power switch

Press to supply +48V phantom power to the associated XLR input. This phantom power circuit is suitable for most condenser microphones.

3. Input gain level controls 1/2

These potentiometers control the input level of their associated analog Mic/Inst/Line input.

4. “Inst/Line” input switch

Instrument or Line input switch for input 1 & 2.

5. Master level control

This potentiometer controls the master output level of the analog outputs.

6. Headphone level control

This potentiometer controls the output level of the headphone output.

7. Headphone output

This output jack accepts a standard 1/4” stereo TRS headphone connector.

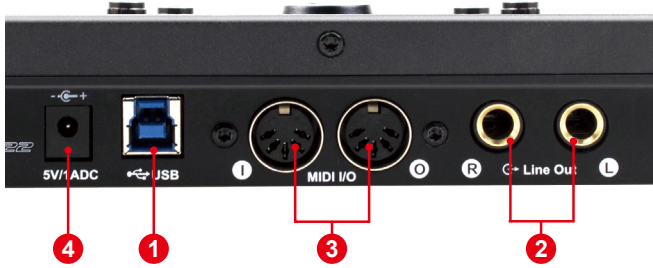
8. Direct Monitoring (DM) level control

This potentiometer controls the direct monitoring output level.

9. Direct monitoring mode switch

Switch between the monitoring signal from Stereo DM/Mono DM to PC signal:
Stereo: Stereo direct monitoring signal will be routed to the monitoring channel.
Mono: Mono direct monitoring signal will be routed to the monitoring channel.
PC: PC signal (i.e. wet signal) will be routed to the monitoring channel.

Rear Panel



1. USB 3.0 Connector

Connect it with the provided USB cable to your Mac/PC's USB connector. Your Mac/PC must have a USB3.0 connector in order to run the full speed of PlatformU22 .

2. Line outputs L/R

These are unbalanced analog outputs on standard 1/4" TS connectors at +6dBu line level.

3. MIDI I/O connectors

MIDI input and output on standard 5-pin DIN connectors.

4. Power supply connector

PlatformU22 is USB-bus powered. If your computer does not supply sufficient power, connect a ICON 5VDC power supply adapter to this jack.

(Note: You can get the power adapter from ICON distributors/dealers near you.)

Windows driver installation

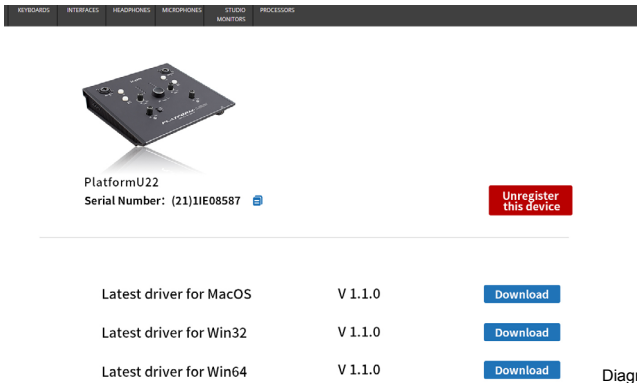
Please follow the step-by-step procedures below to install your PlatformU22 USB recording interface and its driver.

1. Turn on your computer

Note: Do not connect the PlatformU22 digital audio interface to your computer yet.

2. Download the Windows driver from your “Personal User Page at www.iconproaudio.com” (Please refer to Diagram 1.X for instruction)

After you downloaded the driver file, please click it to start the installation process.



Latest driver for MacOS	V 1.1.0	Download
Latest driver for Win32	V 1.1.0	Download
Latest driver for Win64	V 1.1.0	Download

Diagram 1

1. Installation Wizard appears

Choose "Next" when you see the Welcome Screen shown in Diagram 2.

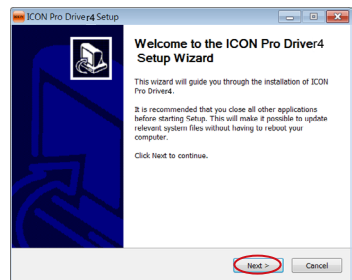


Diagram 2

2. License Agreement

Click "I Agree" to proceed.

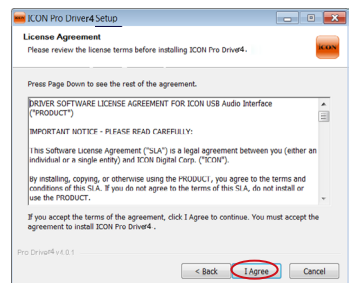


Diagram 3

3. Select components for installation

Check mark the components that you would like to install. We strongly recommend you to select all components.

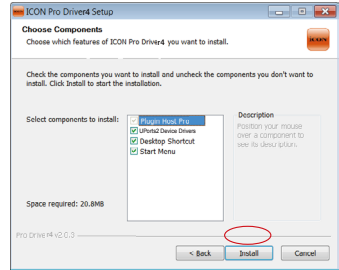


Diagram 4

4. Preparing installation files

The installation process started, the process may take some time depending on your computer performance, please be patient and wait for the process to finish.

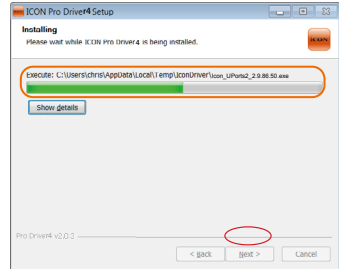


Diagram 5

5. Click “Install” to proceed.

Note: Same message will appear three times as there are three different drivers installation.



Diagram 6



Diagram 7



Diagram 8

6. Setup completed

A window as shown in Diagram 9 should appear. Choose "Finish".

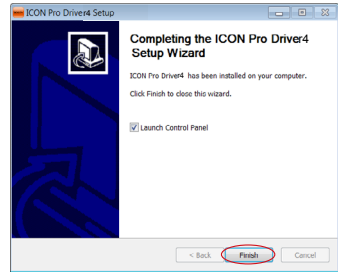


Diagram 9

7. Launch the software control panel

You may click the ICON ProAudio logo on the system tray to launch the software control panel (Page 12).

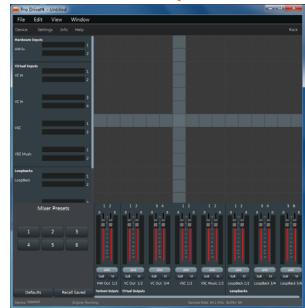
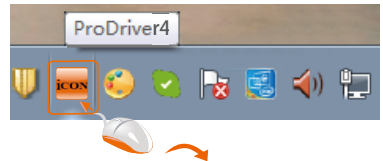


Diagram 10

8. Connect your PlatformU22 digital audio interface

Now connect the PlatformU22 digital audio interface to your computer's USB port .

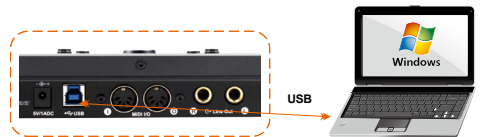


Diagram 11

ProDriver

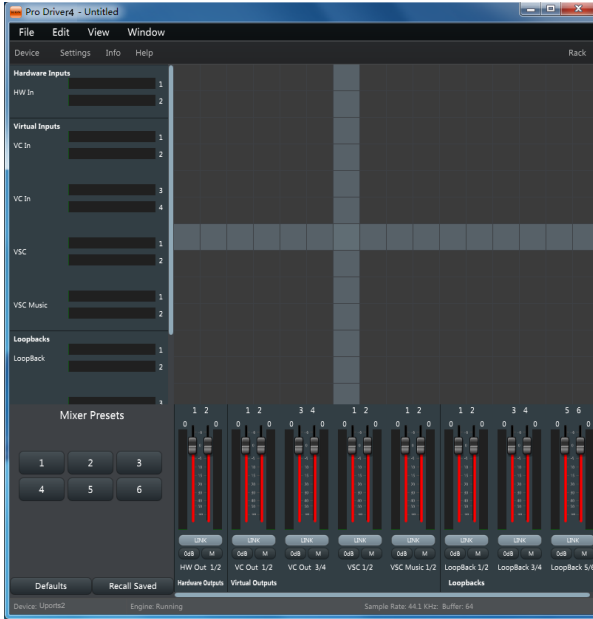


Diagram 12

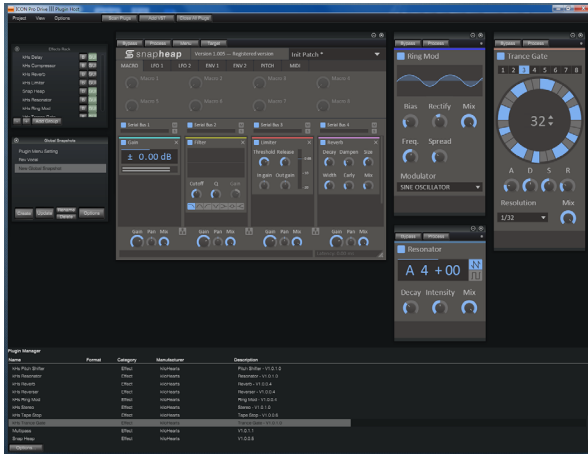


Diagram 13

Introducing ProDriver, the leading edge in audio innovation for stage, studio and streaming from Icon ProAudio. The ProDriver audio system supplies you with the most reliable tools for almost any audio application, in the moment, right when you need it. The heart of the system, is our driver, employing breakthrough technology and zero latency monitoring. The user interface makes it easy to grab, route and redirect audio from any source in your computer with our virtual signal router. Use the ProDriver Plugin Host to connect your favorite VST, Audio Units and Direct X plugins. Run ProDriver in standalone mode or with your favorite DAW. Save your favorite plugin chains as presets and recall them during your session or live on stage in real time.

Mixer control panel

On the mixer control panel, there are three different main types of ASIO channels that you can manipulate.

1. PlatformU22 Hardware channels (HW In 1/2 & HW Out 1/2)

These are the hardware input and output channels on PlatformU22 .

2. PlatformU22 Virtual channels (VC In 1/2, 3/4 and 5/6), (VC Out 1/2, 3/4 and 5/6)

These are the input and output virtual channels that related to the WDM.

For example: WDM Out 1/2 linked to VC In1/2

VC Out1/2 linked to WDM In1/2

3. PlatformU22 Loopback channels (LB 1/2, 3/4 and 5/6)

These are the ASIO loop-back channels.

By activating different cross points, you may route the corresponding signal to your desired channels.

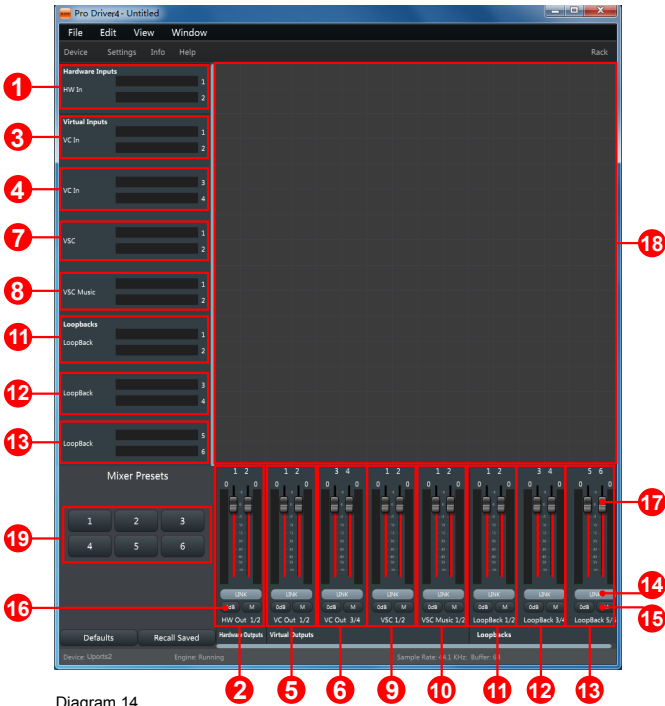


Diagram 14

1. HW Input 1/2 level metering

Showing the hardware 1/2 input level (HW In 1/2).

2. HW Output 1/2 level metering

Showing the hardware 1/2 output level (HW Out 1/2).

3. VC In 1/2 (Virtual) input level metering

Showing the WDM 1/2 output level (VC In 1/2).

4. VC In 3/4 (Virtual) input level metering

Showing the WDM 3/4 output level (VC In 3/4).

5. VC In 5/6 (Virtual) input level metering

Showing the WDM 5/6 output level (VC In 5/6).

6. VC Out 1/2 (Virtual) output level metering

Showing the ASIO 1/2 VC output level (VC Out 1/2).

7. VC Out 3/4 (Virtual) output level metering

Showing the ASIO 3/4 VC output level (VC Out 3/4).

8. VC Out 5/6 (Virtual) output level metering

Showing the ASIO 5/6 VC output level (VC Out 5/6).

9. Loopback 1/2

Showing the ASIO loop-back 1/2 channel's level metering.

10. Loopback 3/4

Showing the ASIO loop-back 3/4 channel's level metering.

11. Loopback 5/6

Showing the ASIO loop-back 5/6 channel's level metering.

12. Link switch

Switch to adjust both channels level simultaneously.

13. Mute switch

Switch to mute the corresponding channel.

14. "0dB" switch

Switch to instantly adjust the corresponding channel to "0dB" level.

15. Gain control fader

Slide to adjust the gain level for the corresponding channel.

16. Inputs & Outputs Matrix switches

Switch to turn On/Off the corresponding input channel route to the corresponding output channel. The matrix is very useful and makes your inputs and outputs very flexible. You may route any of your input(s) to any output(s).

Settings (Sample rate and latency settings)

Click the "Setting" button to launch the settings window.

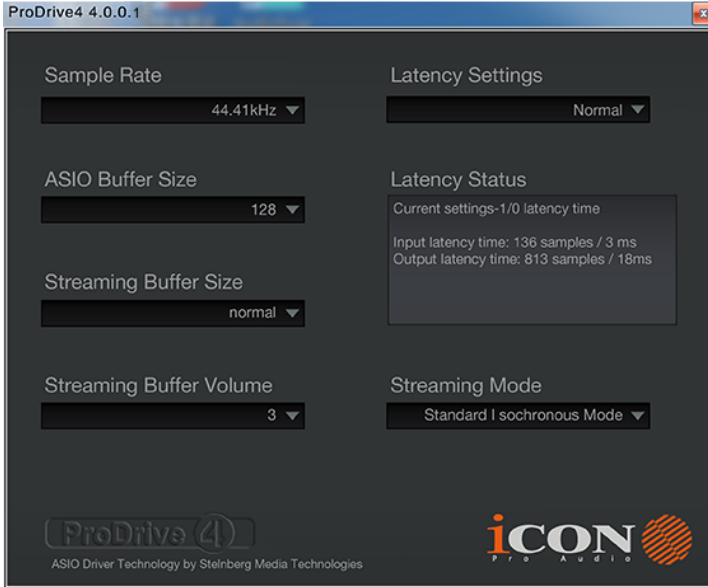


Diagram 15

Sample rate setting

Select your desired sampling rate from 44.1KHz to 192KHz on the pull down window shown in Diagram 16.

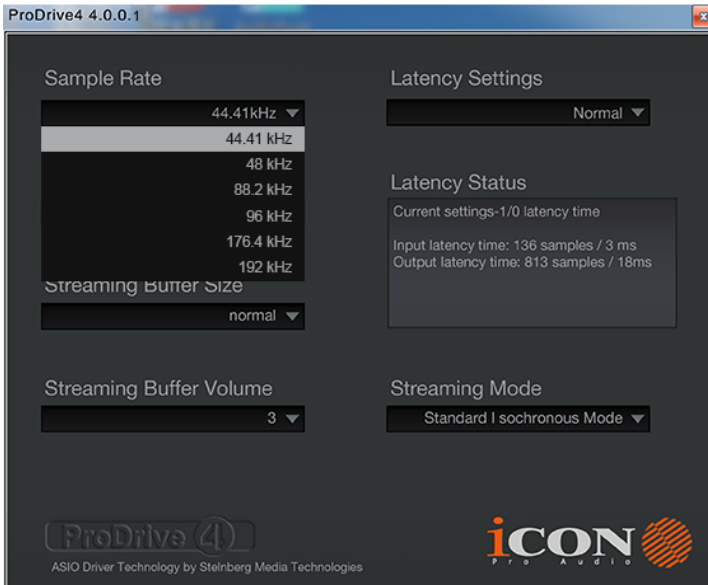


Diagram 16

Latency settings

There are six standard latency settings to select. If you would like to customize your own latency value, select custom.

- Safe (maximum latency)
- Extra Large
- Normal
- Small
- Very Small
- Minimum (minimum latency)
- Custom

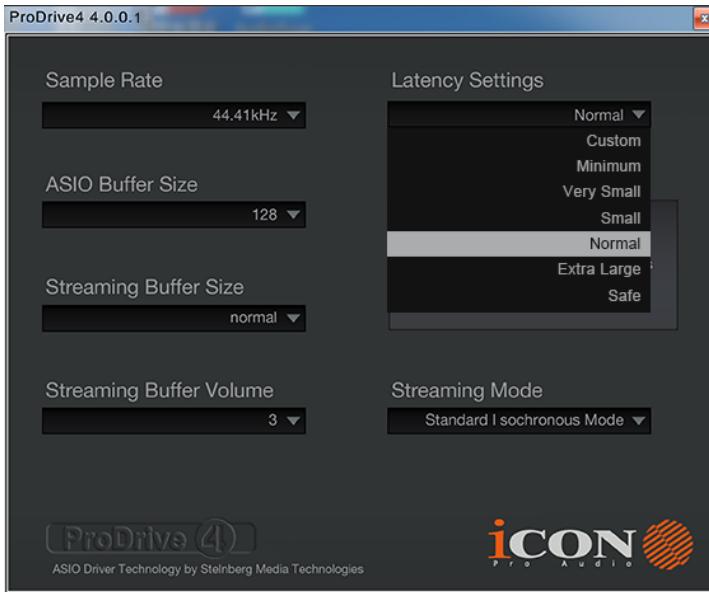


Diagram 17

There are three different settings you can adjust to customize your own latency settings: These values include:

1. ASIO buffer Size

You may adjust the value ranging from 32/64/128/256/512/1024/2048 and 4096.

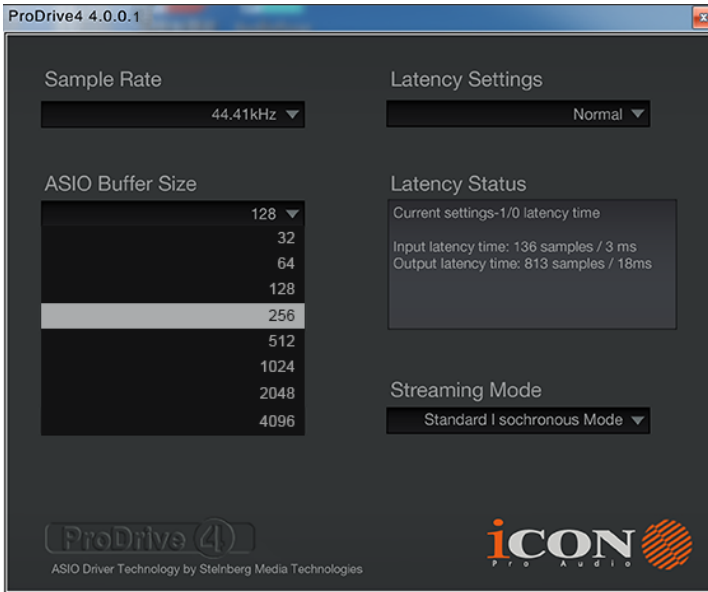


Diagram 18

2. Streaming buffer Size

Adjustable settings: Minimum/Low/Normal/High and Maximum.

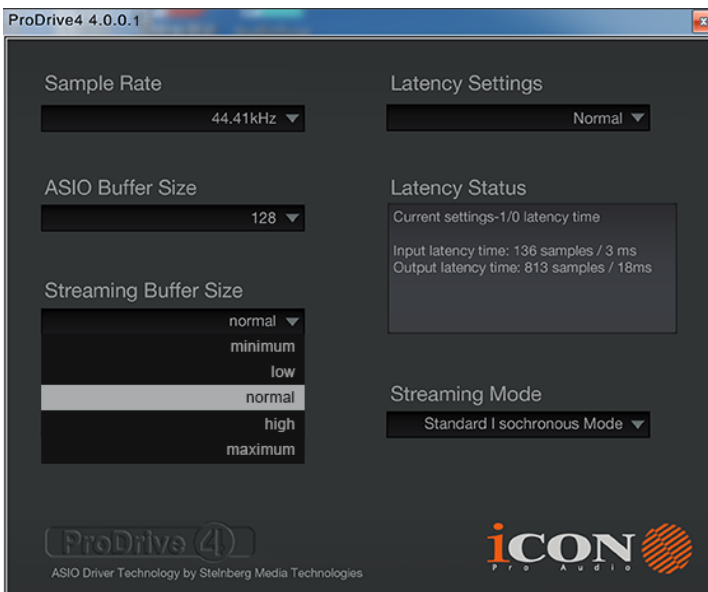


Diagram 19

3. Streaming buffer volume

Adjustable values: 2/3 and 4.

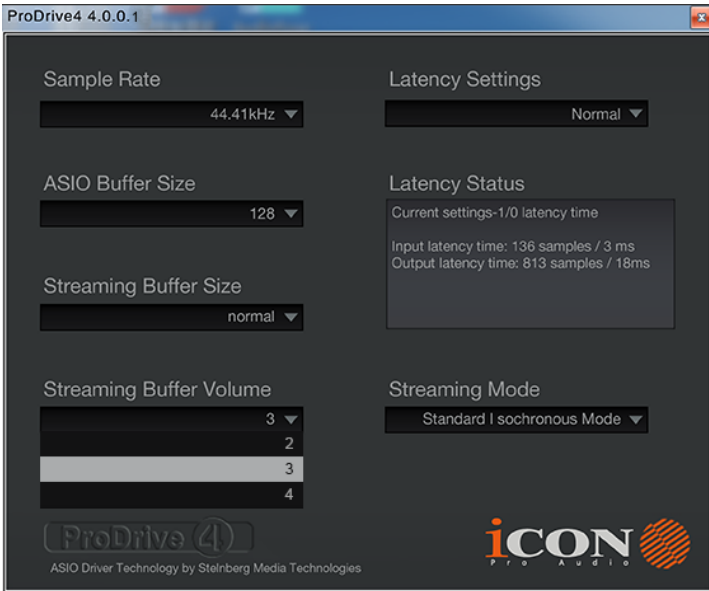


Diagram 20

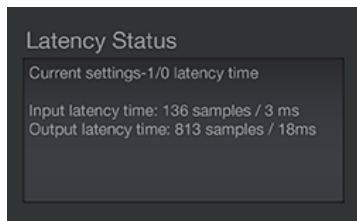
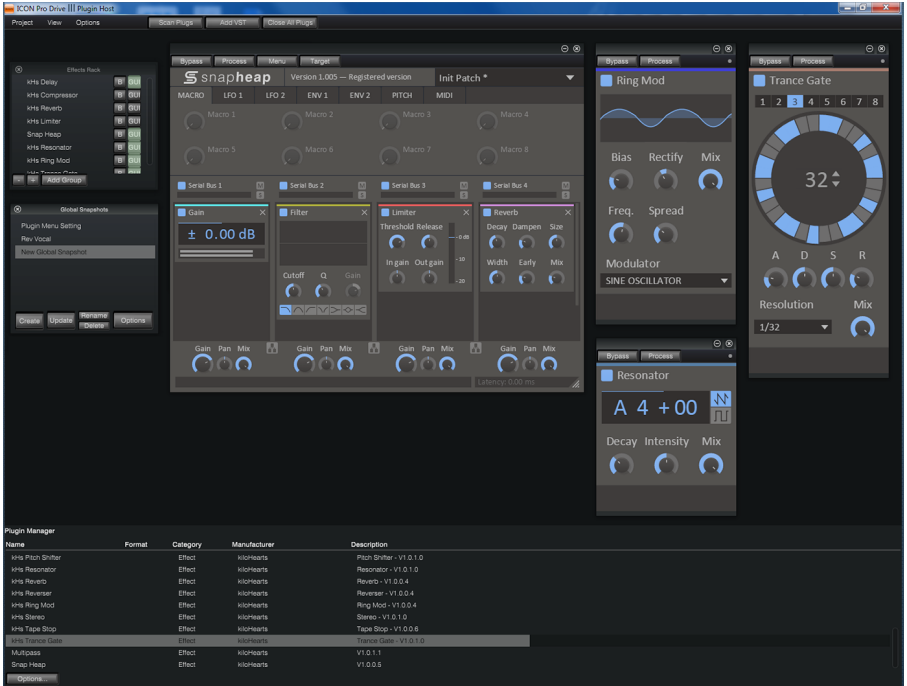


Diagram 21

(Note: If a warning message appears on the “Latency Status” windows, please adjust a larger latency setting.)

(Note: If a clicking sound occurs, you should change to a larger buffer size for the settings. If the largest buffer size has been selected and there is still a clicking sound. It means your computer performance is not able to handle the task. (It is not caused by PlatformU22 digital audio interface.)

ProDriver hosting rack



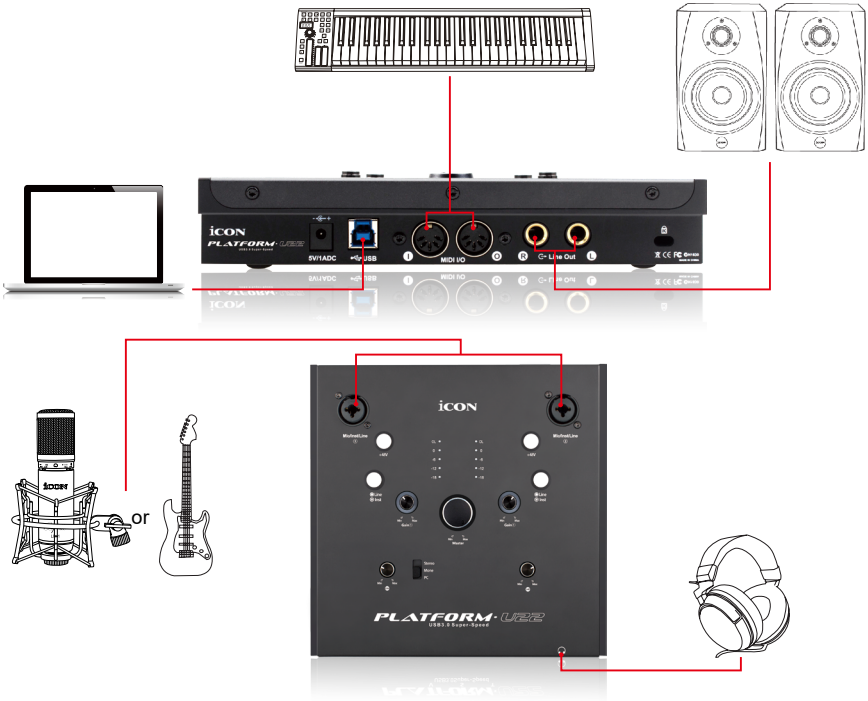
With the ProDriver Rack, you can use any of your plug-ins with your DAW. Or you may use your device as a standalone plug-ins effector without the need to run a DAW.

Hardware Connections

Connect the PlatformU22 digital audio interface outputs to your amplifier, powered monitors or surround system. Two-channel stereo operation, the default outputs are channels 1 and 2.

If you are monitoring through headphones, connect your headphones to the device's headphone output.

Connect your microphones, instruments or other line level analog sources to the device's analog inputs.



Specifications

Line Inputs 1/2(balanced):

Frequency Response:	22Hz to 22kHz (+/-0.1dB)
Dynamic Range:	117dB, A-weighted
Signal-to-Noise Ratio:	-117dB, A-weighted
THD+N:	-107dB
Crosstalk:	-107dB @ 1kHz
Nominal Input Level:	Balanced: +4dBu Unbalanced: -10dBV
Maximum Input level:	Balanced: +10.2dBu, typical; Unbalanced: +2.0dBV, typical
Input Impedance:	10K Ohms, typical
Adjustable Gain:	> 50dB

Mic/Inst Inputs 1/2 (Balanced; at Minimum Gain):

Frequency Response:	22Hz to 22kHz (+/-0.1dB)
Dynamic Range:	117dB, A-weighted
Signal-to-Noise Ratio:	-117dB, A-weighted
THD+N:	-107dB
Crosstalk:	-107dB @ 1kHz
Maximum Input level:	-3.8dBu, typical
Input Impedance:	Inst in: 500K Ohms, typical; Mic in: 1.8K Ohms, typical
Adjustable Gain:	> 50dB
Total Gain Range:	+54dB

Line Outputs 1-2 (balanced):

Frequency Response:	22Hz to 22kHz (+/-0.1dB)
Dynamic Range:	117dB, A-weighted
Signal-to-Noise Ratio:	-117dB, A-weighted
THD+N:	-107dB
Crosstalk:	-107dB @ 1kHz
Nominal Output Level:	Balanced: +4dBu, typical;
Maximum Output Level:	+10.2dBu;
Output Impedance:	150 Ohm
Load Impedance:	600 Ohm minimum

Headphone Outputs: (at Maximum Volume; Into 100 Ohm load):

Frequency Response:	22Hz to 22kHz (+/-1dB)
Power into Ohms:	90 mW into 100 Ohms
THD+N:	<0.06% (-66dB)
Signal-to-Noise Ratio:	-105dB, A-weighted
Max Output Level into 100 Ohms:	+2.0dBV, typical
Output Impedance:	75 Ohm
Load Impedance:	32 to 600 Ohms

Services

If your PlatformU22 needs servicing, follow these instructions.

Check our online help centre at <http://support.iconproaudio.com/hc/en-us>, for information, knowledge, and downloads such as:

1. FAQ
2. Download
3. Learn More
4. Forum

Very often you will find solutions on these pages. If you don't find a solution, create a support ticket at our online Help Center at the link below, and our technical support team will assist you as soon as we can.

Navigate to <http://support.iconproaudio.com/hc/en-us> and then sign in to submit a ticket.

As soon as you have submitted an inquiry ticket, our support team will assist you to resolve the problem with your ICON ProAudio device as soon as possible.

To send defective products for service:

1. Ensure the problem is not related to operation error or external system devices.
2. Keep this owner's manual. We don't need it to repair the unit.
3. Pack the unit in its original packaging including end card and box. This is very important. If you have lost the packaging, please make sure you have packed the unit properly. ICON is not responsible for any damage that occurs due to non-factory packing.
4. Ship to the ICON tech support center or the local return authorization. See our service centers and distributor service points at the link below:

If you are located in North America

Send the product to:

ICON Service Centre
611 Potomac PL Ste 102
Smyrna, 37167-5655 Tennessee.
United States
Tel. : +1 615 540 989

If you are located in Hong Kong

Send the product to:

ASIA OFFICE:
Unit F, 15/F. , Fu Cheung Centre,
No. 5-7 Wong Chuk Yueng Street,
Fotan,
Sha Tin, N. T. , Hong Kong.

If you are located in Europe

Send the product to:

Sound Service
GmbHEuropean
HeadquarterMoriz-Seeler-Straße
3D-12489 Berlin
Telephone: +49 (0)30 707 130-0
Fax: +49 (0)30 707 130-189
E-Mail: info@sound-service.eu

5. For additional update information please visit our website at:
www.iconproaudio.com



<p>天猫官方旗舰店</p>  <p>天猫店iconproaudio旗舰店</p>	<p>抖音号</p>  <p>抖音iCON艾肯</p>	<p>哔哩哔哩</p>  <p>B站iCONProAudio</p>	<p>微信公众号</p>  <p>微信号iCON-PRO</p>	<p>官方售后QQ</p>  <p>4006311312.114.qq.com</p>
--	--	---	---	--

中国地区用户

<p>Twitter</p>  <p>www.twitter.com/iconproaudio</p>	<p>Instagram</p>  <p>www.instagram.com/iconproaudio</p>	<p>Facebook</p>  <p>www.facebook.com/iconproaudio</p>	<p>Youtube</p>  <p>www.youtube.com/iconproaudio</p>
--	--	---	--

<p>Website</p>  <p>www.iconproaudio.com</p>	<p>Support</p>  <p>support.iconproaudio.com</p>	<p>Dashboard</p>  <p>iconproaudio.com/dashboard/</p>
---	---	---

www.iconproaudio.com